

# CERTIFICATE OF LOCATION OF GOVERNMENT CORNER

EAST QUARTER Corner of Section 20, Township 107N, Range 39W

5th Principal Meridian, State of Minnesota, County of MURRAY

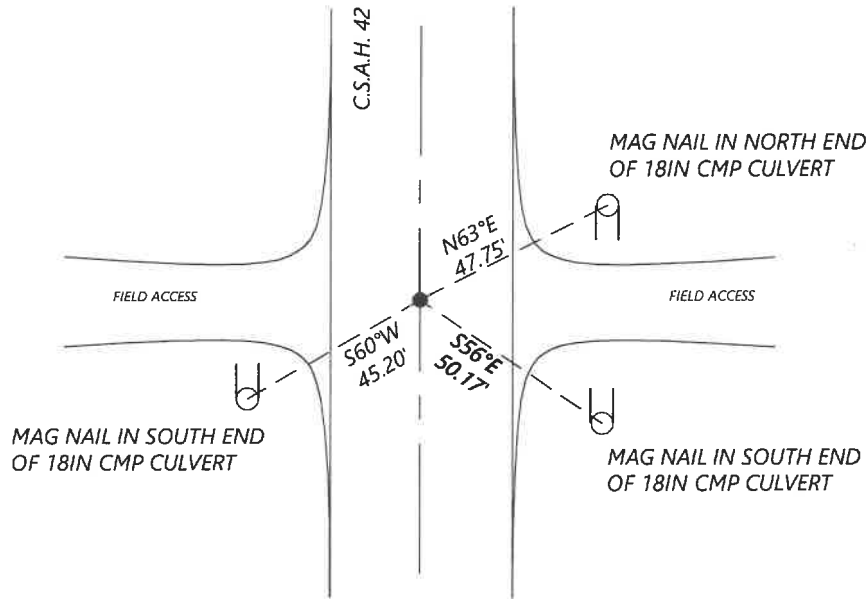
At the corner location shown on the sketch:

On 8/27/2020 found a No. 4 rebar without cap flush with asphalt  
DATE

left monument as found       lowered monument       removed monument (explain)

On \_\_\_\_\_ placed a \_\_\_\_\_  
DATE

### SKETCH OF REFERENCE TIES



N.T.S.

Statement of evidence for this corner location is on back of this page.

I hereby certify that this document was researched and prepared by me or under my direct supervision and that I am a licensed Land Surveyor under the laws of the State of Minnesota.

Signature [Handwritten Signature]

Date 6/16/2021 License No. 45874

Title:

- Land Surveyor       Professional Engineer
- County Surveyor       County Engineer

### OFFICE OF THE COUNTY RECORDER

County of Murray

I hereby certify that this document was filed in the Co.

Recorder's office at \_\_\_\_\_ M. on the \_\_\_\_\_ day of \_\_\_\_\_ A.D. 20

County Recorder Karen Brown

by JUN 22 2021, Deputy

DOCUMENT NO. \_\_\_\_\_

**Statement of Evidence:**

East Quarter Corner of Section 20, Township 107 North, Range 39 West, 5th Principal Meridian, Murray County, Minnesota.

- July 1861      *GLO Notes: Set post in mound.*
- April 1978      *Survey Record for Section 20 shows that the corner was dug with a backhoe and found nothing.*
- Oct. 2000      *A survey in Section 20 by Perry Zieske shows an iron monument was found at the corner. He shows a distance of 2648.12ft to the SE section corner.*
- Aug. 2006      *A survey in Section 21 by Perry Zieske shows a survey marker spike over the iron monument at the corner. He lists the Murray County coordinates for the corner:  
N: 176658.26    E: 558862.68*
- Sept. 2020      *Westwood Professional Services searched and found a No. 4 rebar. Coordinates and tie to the SE section corner fit well with the 2000 and 2006 Zieske surveys.*

Analysis of the recovered data, field evidence and survey measurements, indicates that the monument found is the correct perpetuation of this corner. For additional information concerning this corner please contact Westwood Professional Services.